



# INFORMATION LEAFLET

## EUROPEAN MIGRATION NETWORK (EMN)

### What is the EMN?

The European Migration Network aims to provide up-to-date, objective, reliable and comparable information on migration and asylum to support policymaking in the EU and (Member) States. It also provides the general public with such information through its [website: www.ec.europa.eu/emn](http://www.ec.europa.eu/emn)

#### 1.1 WHO IS INVOLVED?

The EMN consists of the **European Commission** and **National Contact Points** (EMN NCPs) in each Member State, and in Norway. **DG Migration and Home Affairs** co-ordinates the EMN, assisted by two **Service Providers**. The **EMN Steering Board**, chaired by the European Commission and consisting of one representative from each Member State plus Observers from the European Parliament and from Norway, provides strategic guidance on the EMN's activities.

Each **EMN NCP** is appointed by their national government, which results in a variety of types of organisation being designated. These are primarily Ministries of Interior and of Justice, specialised government agencies dealing with migration, international protection and/ or citizenship plus Research Institutes and Country Offices of the International Organisation for Migration. Most EMN NCPs have [national websites](#) which provide the general public with information on migration and asylum in their respective (Member) States.

### What does the EMN do?

The EMN responds to information needs through **Reports, Studies, Ad-Hoc Queries, Policy Briefs (EMN Inform), EMN Bulletin** and **Glossary**.

The EMN does not normally engage in primary research: instead, its key strength is to **collect, document** and **make available**, in an accessible and comparative manner, data and information held or collected at national and EU level.

It further analyses and synthesises this information to improve its comparability and harmonisation at EU level in order to contribute to evidence-based policymaking. Dissemination of information takes place primarily via the EMN website and publications.

The EMN is a **multi-level network**: at EU level, EMN NCPs meet regularly, as well as network and collaborate with other EU level agencies and institutions. These include for example, the European Parliament, the Commission's Eurostat Directorate General, the Fundamental Rights Agency (FRA), the European Asylum Support Office (EASO) and the European Border and Coast Guard Agency (Frontex).

At national level, each EMN NCP develops a network involving partners within their (Member) State with expertise in migration and asylum from a wide stakeholder group, e.g. from government, (academic) research community, and NGOs. The national networks aim to secure a close exchange of information with policymakers at the national level, to better understand their information needs and to enhance the EMN's role in responding quickly to such needs.

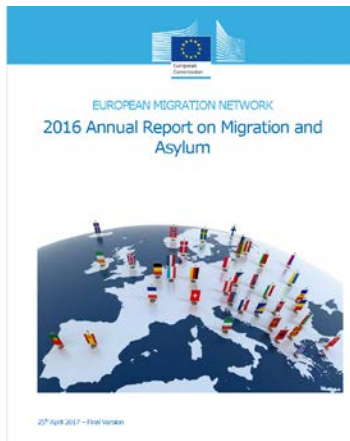
In 2014, the EMN established the **EMN Return Expert Group (REG)**. The REG aims at increasing operational cooperation among (Member) States in order to enhance the coherence between return schemes and reintegration projects.

The REG has also opened up to cooperation with NGOs and international organisations (IOs) and is about to launch an online platform to enable information sharing amongst relevant stakeholders.

### What does the EMN produce?

#### ★ REPORTS

The EMN produces yearly [Annual Reports on Migration and Asylum](#), which outline the most significant political and legislative developments in the area of migration and international protection within the EU Member States and Norway. The 2016 Annual Report on Migration and Asylum is available on the EMN [website](#).



#### ★ COUNTRY FACTSHEETS

Drawing on information collected and analysed from the Annual Report on Migration and Asylum, the [EMN Country Factsheets](#) provide a succinct summary of the main developments in the year in each EU Member State and Norway, whilst at the same time, presenting a selection of the most recent migration and international protection statistics.



#### ★ STUDIES

The EMN also produces [Studies](#), on topics (see below) relevant to policymakers at national and EU levels, to meet both long-term and short-terms needs.



#### How are study topics selected?

Study topics are selected from proposals made by individual or groups of EMN NCP(s) and/ or the European Commission, based on their relevance to policymaking in the (Member) States and for the Commission and its agencies. The Steering Board reviews and formally approves the selection of topics within the context of a biannual EMN Work Programme.

#### How does the EMN produce its studies?

The EMN first agrees on **common specifications** for its studies, to facilitate better comparability between countries, working closely with relevant policymakers. **Advisory groups**, composed of around eight or nine NCPs, are in charge of developing the common specifications, which reflect the needs of all (Member) States. Each EMN NCP then produces a **National Report**, according to the common specifications and often involving contributions from members of their national network. A comparative **Synthesis Report** is then produced by the EMN Service Provider, bringing together the main findings from the national reports, and placing these within an EU perspective (e.g. by reference to recent policy initiatives).

#### What Studies has the EMN produced recently?

In 2017, the EMN produced the following studies:

1. [Family Reunification of Third-Country Nationals in the EU plus Norway: National Practices](#) (April 2017);
2. [Illegal employment of third country nationals in the European Union](#) (August 2017)

The following EMN studies are in the process of drafting and finalisation:

3. Challenges and practices for establishing applicants' identity in migration procedures (expected January 2018)
4. The effectiveness of return in EU Member States: challenges and good practices linked to EU rules and standards' (expected January 2018)
5. The changing influx of asylum seekers in 2014-2016: Member State responses (expected beginning of 2018)
6. (Member) States' Approaches to Unaccompanied Minors Following Status Determination (expected beginning of 2018).

Other recent reports are listed below and via the hyperlinks you can download both the Synthesis Report and the corresponding National Reports:

1. [Resettlement and Humanitarian Admission Programmes in Europe – what works?](#) (November 2016)
2. [The Return of Rejected Asylum Seekers: Challenges and Good Practices](#) (November 2016)
3. [Changes in immigration status and purpose of stay: an overview of EU Member States' approaches](#) (July 2016);
4. [Integration of beneficiaries of international/humanitarian protection into the labour market: policies and good practices into the labour market](#) (June 2016);

For EMN Studies produced before 2016, please visit the EMN website under section [EMN Studies](#).

### 1.1.1 AD-HOC QUERIES

Ad-Hoc Queries are a means by which EMN NCPs and the Commission can collect information from the (Member) States in a relatively short period of time on a wide range of asylum and migration-related issues, e.g. legal migration, irregular migration, borders, return, visas etc.

The network produces compilations and summaries of the responses to Ad-Hoc Queries, which rapidly assess the perspective of responding (Member) States in relation to a specific topic. Before launching an Ad-Hoc Query, the EMN consults and shares information with other EU stakeholders (such as EASO and Frontex), to ensure synergies and avoid duplication of work.

### 1.1.2 EMN ANNUAL CONFERENCES AND EVENTS

The EMN, through its national networks, delivers each year two annual EMN Conferences plus an extensive range of national events, conferences and roundtables, sharing and disseminating information on topical migration- and international protection-related issues.

In 2017, the EMN Conference **“The reform of the Common European Asylum System: opportunities and challenges”** took place on the 24<sup>th</sup> and 25<sup>th</sup> May in [St. Julian's, Malta](#).

The organisers brought together more than 250 experts from different fields (e.g. engaged in law enforcement and/or migration) from all EU Member States. In several panel discussions, speakers from the European Commission, EU agencies, inter-governmental and non-governmental organisations, academia and selected EU and non-EU countries presented their views on the implementation of the Common European Asylum System, including the current situation of asylum flows and possible future trends, the asylum procedures and reception conditions in the EU, existing legal pathways and resettlement programmes. Participants also discussed intra-EU solidarity and cooperation with third countries. The conference brought to the fore different asylum practices and lessons learned from various Member States.



*Delegates at the EMN Conference 2017 in Malta*

The second EMN Conference in 2017 **“The EU in the Global Race for Talents: Challenges and Solutions in Strengthening the EU's Competitiveness”** was held on 21<sup>st</sup> and 22<sup>nd</sup> September in [Tallinn, Estonia](#). The EMN conference explored ways in which the European Union and its (Member) States can attract and retain global talent.

Topics to discuss were related to policy frameworks in place at European, national and regional levels to facilitate talent migration, including the proposal for a recast EU Blue Card Directive, the role of the private sector in attracting and retaining talents, student retention and start-up schemes. The conference also collected best practices and lessons learned from various stakeholders for further use by the EU, its Member States and Norway.

### 1.1.3 EMN INFORMS

These provide succinct, key findings and messages to policymakers on a specific topic based on the results of information gathered and analysed by the EMN, for example, from Reports and Studies, or from Ad-Hoc Queries.

In 2017, the EMN has produced the following *Inform*s, in addition to those related to the EMN Studies:

1. [EMN policy brief on migrants' movements through the Mediterranean](#) (November 2017);
2. [Retaining third-country national students in the European Union](#) (September 2017).

For EMN *Inform*s produced before 2017, please visit the EMN website under section [EMN Informs.](#)

### 1.1.4 EMN BULLETINS

These provide up to date, topical information required by, and of relevance to, policymakers on a quarterly basis.

They highlight recent EU and national developments, and relevant information extracted from the EMN's existing knowledge, plus latest published statistics, primarily from Eurostat. To subscribe to the EMN Bulletin, please e-mail [emn@icf.com](mailto:emn@icf.com).

### 1.1.5 EMN GLOSSARY

The EMN Glossary improves comparability by enabling a common understanding and use of terms and definitions relating to asylum and migration. The terms presented are those recommended for official use in each EMN Member country. For its definitions and references, the Glossary draws on a variety of sources, primarily those given in the EU asylum and immigration acquis.

The terms are available in the majority of (Member) State languages. Version 4.0 of the Glossary is accessible on the EMN website [here](#).

### 1.1.6 EMN STATUS REPORTS

The EMN produces an annual Status Report, reporting on its activities and achievements.

The Status Report is adopted as a Commission Staff Working Paper and formally transmitted to the European Parliament, the Council, the Commission, the Economic and Social Committee and the Committee of the Regions.

## Where can I find more information?

All EMN reports and studies, including the [National Reports](#) and [Synthesis Reports](#), [Ad-Hoc Query compilations](#), [Country Factsheets](#), [Glossary](#), [EMN Bulletins](#) and [EMN Informs, are all published on the \[EMN website\]\(#\).](#)

## Who are the current EMN NCPs?

In each (Member) State, an EMN NCP consists of at least three experts either from the same entity or from different entities. In the latter case, one entity acts as the national coordinator and, in such cases, it is their details which are given overleaf.

An **organogram** of the organisation of asylum and migration policies in each (Member) State is available on the EMN website, on the page dedicated to EMN Members ([link](#)).

You may contact the relevant EMN NCP for your (Member) State via these contact details.

**AUSTRIA:** The AT EMN NCP is the [International Organization for Migration](#) (IOM) Country Office for Austria. The IOM assists the Austrian government in meeting the challenges of migration management, and its goal is to provide an advanced understanding of migration issues, encourage social and economic development through migration, and uphold the human dignity and well-being of migrants.

*Information:* [www.emn.at](http://www.emn.at)

*Contact:* [emnaustria@iom.int](mailto:emnaustria@iom.int)

**BELGIUM:** The BE EMN NCP is composed of experts of the [Immigration Office](#) within the Home Affairs Federal Public Service, the [Office of the Commissioner General for Refugees and Stateless Persons](#), the [Federal Migration Centre Myria](#) and the [Federal Agency for the Reception of Asylum Seekers](#). The Home Affairs FPS acts as the national coordinator.

*Information:* [www.emnbelgium.be](http://www.emnbelgium.be)

*Contact:* [emn@ibz.fgov.be](mailto:emn@ibz.fgov.be)

**BULGARIA:** The BG EMN NCP is the [Migration Directorate of the Ministry of Interior](#).

*Information:* [www.mvr.bg](http://www.mvr.bg)

*Contact:* [GRSharlandzhiev@mvr.bg](mailto:GRSharlandzhiev@mvr.bg) (NCP - Coordinator).

**CROATIA:** The HR EMN NCP is the International Organization for Migration (IOM) Office in Zagreb, Croatia. In conducting EMN-related activities, HR EMN NCP provides support and closely cooperates with the Ministry of Interior's designated officials.

*Information:* <http://www.emn.hr>  
*Contact:* [emncroatia@iom.int](mailto:emncroatia@iom.int)

**CYPRUS:** The Ministry of Interior is the coordinator of the CY EMN NCP, composed of the Civil Registry & Migration Department, the Asylum Service and the Immigration Police Department of the Government of Cyprus.

*Information:* [www.moi.gov.cy](http://www.moi.gov.cy)  
*Contact:* [tcharalambidou@papd.mof.gov.cy](mailto:tcharalambidou@papd.mof.gov.cy) (NCP - Coordinator); [aargyropoulou@papd.mof.gov.cy](mailto:aargyropoulou@papd.mof.gov.cy) (Member of the Steering Board).

**CZECH REPUBLIC:** The CZ EMN NCP is the Department for Asylum and Migration Policy of the Ministry of the Interior. The Department acts as the coordinator of affairs relating to migration and asylum, both at the legislative and the implementation level and is also responsible for the integration of non-Czech citizens.

*Information:* [www.emncz.eu](http://www.emncz.eu)  
*Contact:* [emncz@mvcz.cz](mailto:emncz@mvcz.cz)

**DENMARK:** Denmark did not take part in the adoption of the Decision establishing the EMN, but is represented as an Observer by the Ministry of Refugees, Immigration and Integration Affairs.

*Information:* [www.inm.dk](http://www.inm.dk)  
*Contact:* [PBT@inm.dk](mailto:PBT@inm.dk)

**ESTONIA:** The EE EMN NCP is part of the School of Governance, Law and Society at Tallinn University, allowing the unit to work closely with academics that engage in research in the areas of migration policy, mobility, as well as issues related to integration and ethnic and civic identity.

*Information:* [www.emn.ee](http://www.emn.ee)  
*Contact:* [emn@tlu.ee](mailto:emn@tlu.ee)

**FINLAND:** The FI EMN NCP is attached to the Legal Service and Country Information Unit of the Finnish Immigration Service (Migri), which processes and decides applications for asylum, residence and citizenship. The Legal Service and Country Information Unit provides legal services and country of origin information to support the work of Migri and other authorities working on migration issues.

*Information:* [www.emn.fi](http://www.emn.fi)  
*Contact:* [emn@migri.fi](mailto:emn@migri.fi)

**FRANCE:** The FR EMN NCP is attached to the Department of Statistics, Studies and Documentation within the Directorate-General for Foreign Nationals in France of the Ministry of Interior, (*Ministère de l'Intérieur*). The Department of Statistics, Studies and Documentation facilitates access to statistics and data on migration and asylum, required for the elaboration of EMN outputs.

*Information:*  
<http://www.immigration.interieur.gouv.fr/Europe-et-International/Le-reseau-europeen-des-migrations-REM2>  
*Contact:* [emn@interieur.gouv.fr](mailto:emn@interieur.gouv.fr)

**GERMANY:** The DE EMN NCP is the Federal Office for Migration and Refugees (BAMF). As the Central Migration Agency, the Federal Office processes applications for asylum and subsidiary protection and plays a central role in the implementation of integration policies. BAMF carries out scientific research on issues of migration and integration to obtain analytical conclusions regarding the control of immigration.

Moreover, BAMF observes and evaluates the research sector at national and international level, including providing advice to the Federal Government on immigration policy.

*Information:* [www.emn-germany.de/](http://www.emn-germany.de/)  
[www.emn-deutschland.de](http://www.emn-deutschland.de)  
*Contact:* [EMN\\_NCP-DE@bamf.bund.de](mailto:EMN_NCP-DE@bamf.bund.de)

**GREECE:** The EL EMN NCP is composed of the Hellenic Ministry for Migration Policy, General Secretariat for Migration Policy, Directorate for Migration Policy. The EU and International Migration Policies Unit is competent to manage legal migration issues, policy, admission and stay of third-country nationals in Greece, as well as EU relevant issues.

*Information:* [www.immigration.gov.gr](http://www.immigration.gov.gr)  
*Contact:* [emn@immigration.gov.gr](mailto:emn@immigration.gov.gr)

**HUNGARY:** The HU EMN NCP is the Department of European Co-operation within the Ministry of Interior. The department is responsible for the elaboration and co-ordination of migration, asylum and integration policies and supervises the work of the Immigration and Asylum Office. The department is also responsible for the professional tasks related to the Asylum, Migration and Integration Fund (AMIF).

*Information:* [www.emnhungary.hu](http://www.emnhungary.hu)  
*Contact:* [emh@bm.gov.hu](mailto:emh@bm.gov.hu)

**IRELAND:** The IE EMN NCP is the Economic and Social Research Institute (ESRI), which is the principal institution engaged in economic and social research in Ireland. It is an independent research body with a mission to produce objective, high quality research, which informs policymaking and increases understanding of economic and social change.

Information: [www.emn.ie](http://www.emn.ie)  
Contact: [EMN.Ireland@esri.ie](mailto:EMN.Ireland@esri.ie)

**ITALY:**

The IT EMN NCP is the Central Directorate for Immigration and Asylum Policies of the Department for Civil Liberties and Immigration of the Ministry of Interior. The Central Directorate for Immigration and Asylum Policies has functions of analysis and planning of migration policies, and monitors and stimulates integration policies.

Information: [www.emnitalyncp.it](http://www.emnitalyncp.it)  
Contact: [emn.italy@interno.it](mailto:emn.italy@interno.it)

**LATVIA:** The LV EMN NCP is the Office of Citizenship and Migration Affairs of the Ministry of Interior. It is responsible for implementation of state migration policy, maintenance of the Population Register and issuance of identification and travel documents.

Information: [www.emn.lv](http://www.emn.lv)  
Contact: [emn@pmlp.gov.lv](mailto:emn@pmlp.gov.lv)

**LITHUANIA:** The LT NCP is composed of representatives from the Ministry of the Interior, and the Migration Department, State border guard service as well as the International Organization for Migration (IOM) Vilnius office, which acts as the national co-ordinator for the EMN. This collaboration provides a more diversified perspective towards migration challenges and also leads to increased networking and accommodation of different viewpoints while implementing EMN activities.

Information: [www.emn.lt](http://www.emn.lt)  
Contact: [emn@iom.lt](mailto:emn@iom.lt)

**LUXEMBOURG:** The LU EMN NCP is composed of a team of experts from the Directorate of Immigration of the Ministry of Foreign and European Affairs, the Luxembourg Reception and Integration Agency of the Ministry of Family, Integration and the Greater Region; the Centre d'Étude et de Formation Interculturelles et Sociales (CEFIS); the National Institute of Statistics and Economic Studies (STATEC); and the University of Luxembourg, which acts as the national coordinator.

Information: [www.emnluxembourg.lu](http://www.emnluxembourg.lu)  
Contact: [emn@uni.lu](mailto:emn@uni.lu)

**MALTA:** The Maltese EMN NCP is located within the Ministry for Home Affairs and National Security (Third-Country Nationals Unit). The MT EMN NCP's role is to establish a national migration network consisting of a wide range of national stakeholders active in the field of migration and asylum and to create awareness-raising among them. The national partners regularly contribute to EMN outputs.

Information:  
<http://homeaffairs.gov.mt/en/MHAS-Information/EMN/Pages/European-Migration-Network.aspx>  
Contact: [emn.ncp@gov.mt](mailto:emn.ncp@gov.mt)

**NETHERLANDS:** The NL EMN NCP is the Research and Analysis Department of the Immigration and Naturalisation Service. The Immigration and Naturalisation Service (IND) is an agency of the Ministry of Justice and Security.

Information: [www.ind.nl](http://www.ind.nl) or [www.emnnetherlands.nl](http://www.emnnetherlands.nl)  
Contact: [EMN@ind.minvenj.nl](mailto:EMN@ind.minvenj.nl)

**POLAND:** The PL EMN NCP is located within the Analysis and Migration Policy Department of the Ministry of the Interior and Administration, which acts as a coordinator of the PL NCP EMN at national level. It is supported by the experts from the Ministry of Family, Labour and Social Policy, Office for Foreigners, National Border Guard Headquarters and the Central Statistical Office.

Information: [www.emn.gov.pl](http://www.emn.gov.pl)  
Contact: [esm@mswia.gov.pl](mailto:esm@mswia.gov.pl)

**PORTUGAL:** The PT EMN NCP is the Immigration and Borders Service (SEF), an entity belonging to the Ministry of Internal Affairs. SEF is the national authority responsible for the entry, permanence, exit and removal of foreigners and also for the technical assistance and implementation of the national policies on immigration and asylum. Furthermore, SEF's mission encompasses the study and promotion of measures and actions related to national policies on immigration, asylum and borders and also the responsibility of issuing national statistics on immigration and asylum.

Information: <http://rem.sef.pt>  
Contact: [gepf@sef.pt](mailto:gepf@sef.pt)

**ROMANIA:** The RO EMN NCP is the Research, Analyses and Prognosis Centre, Romanian Immigration Office

Information: [www.mai.gov.ro](http://www.mai.gov.ro)  
Contact: [ccap.ori@mai.gov.ro](mailto:ccap.ori@mai.gov.ro)

**SLOVAK REPUBLIC:** The SK EMN NCP is composed of the International Organisation for Migration (IOM) in Bratislava, which acts as the national coordinator for the EMN; the Ministry of Interior, specifically the Bureau of Border and Alien Police of the Police Force Presidium, the Migration Office and the Department of Foreign and European Affairs of the Office of the Minister of Interior; the Ministry of Labour, Social Affairs and Family and the Statistical Office.

*Information:* [www.emn.sk](http://www.emn.sk) / [www.iom.sk](http://www.iom.sk)

*Contact:* [ncpslovakia@iom.int](mailto:ncpslovakia@iom.int)

**SLOVENIA:** The SI EMN NCP is composed of ten experts from different ministries responsible for migration and asylum area, such as the Ministry of Interior and the Police, Ministry of Foreign Affairs and Ministry of Labour, Family, Social Affairs and Equal Opportunities. Base on EMN Multiannual Working Program Slovenian NCP cooperates with other NCPs, Commission, EU Institutions, EU Agencies, NGOs and other EMN stakeholders and partners in preparing EMN documents.

*Information:* [www.emm.si](http://www.emm.si)

*Contact:* [emn.mnz@gov.si](mailto:emn.mnz@gov.si)

**SPAIN:** The ES EMN NCP is composed of experts from the Ministries (of Employment and Social Security, of Interior, for Foreign Affairs and Cooperation, and of Justice) and the General Prosecutor's Office. It is coordinated by the Deputy General Directorate for Legal affairs unit under the responsibility of the General Secretariat for Immigration and Emigration, Ministry of Employment and Social Security, with the following task and activities, among others: the elaboration of normative projects and reports on matters relating to immigration and emigration; preparation of policy proposals related to the development, approval, implementation and application of standards of the European Union and/or of international scope, on matters within its competence; coordination of the action of the General Secretariat in the field of European Union as well as in the case of other international organizations in the field of migration, and the elaboration of instructions for policy development in the area of the General

Secretariat aimed at the peripheral bodies of the General Administration of the State.

*Information:*

<http://extranieros.empleo.gob.es/es/redeuropea/migracion/>

*Contact:* [rem@meyss.es](mailto:rem@meyss.es)

**SWEDEN:** The SE EMN NCP is the Swedish Migration Agency. The Swedish Migration Agency is the responsible administrative agency within the area of migration, for issues concerning residence permits, work permits, visas, reception of asylum seekers, return, citizenship and repatriation. The NCP is located at the Department of Control, Coordination and Analysis within the Migration Agency.

*Information:* [www.emnsweden.se](http://www.emnsweden.se)

*Contact:* [EMN@migrationsverket.se](mailto:EMN@migrationsverket.se)

**UNITED KINGDOM:** The UK EMN NCP is located within Migration and Border Analysis Unit of the Home Office Science Group and consists of a multi-disciplinary group of, researchers and statisticians supporting UK policymakers and operations. They carry out a programme of research and analysis including work on the drivers, costs and benefits of migration, border security, enforcement of immigration law, and the European and international contexts of migration to the UK.

They also undertake policy and programme evaluation, link migration research across government departments and engage with migration researchers outside of government.

*Information:* <http://www.emnukncp.org/>

*Contact:* [emn@homeoffice.gsi.gov.uk](mailto:emn@homeoffice.gsi.gov.uk)

**NORWAY:** Norway participates in the EMN via a Working Arrangement between the European Commission and the Norwegian Ministry of Justice and Public Security. The NO EMN NCP was established on 1<sup>st</sup> January 2011 and consists of experts from the Norwegian Directorate of Immigration and the Ministry of Justice and Public Security.

*Information:* [www.emnnorway.no](http://www.emnnorway.no)

*Contact:* [emnnorway@udi.no](mailto:emnnorway@udi.no)

*Version:* December 2017



**PUBLISHED**

January, 2018

European Migration Network (2017). EMN Information Leaflet. Brussels: European Migration Network.

**READ MORE:**

EMN website: [www.ec.europa.eu/emn](http://www.ec.europa.eu/emn)

EMN LinkedIn page: <https://www.linkedin.com/company/european-migration-network>